

# SERVICE BULLETIN

SB No. 51 Issue No. 1

**TITLE**
**INSPECTION OF RUDDER CABLE TO LINK PLATE SOCKET HEAD CAP SCREW**
**CLASSIFICATION**

This Service Bulletin has been classified as Mandatory by the C.A.A.

**COMPLIANCE**

Before next flight

**APPLICABILITY:**

All T67 GRP series aircraft Post Mod 95.

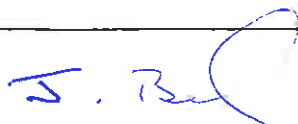
**INTRODUCTION:**

Following an incident whereby the rudder pedal fouled on the rudder cable link plate bolt tail, subsequent inspection found that the bolt was incorrectly assembled.

**ACTION:**

1. Refer to Fig. 1. Check the direction of the head of the bolt. It must be outboard, ie towards the No.3 pedal and a minimum clearance of 8mm from the pedal must be present after taking up any slack or backlash in the rudder pedal system.
2. If it is not in the correct orientation, remove and replace it with the bolt head adjacent to the rudder pedal.
3. Some aircraft have a socket head cap screw fitted pre Mod M471. SAL Mod M471 is available to fit a pan head bolt which increases the clearance to the rudder pedal, if required.
4. If the required clearance is not achieved through correct orientation and implementation of Mod M471, contact SAL Product Support Department for further information.

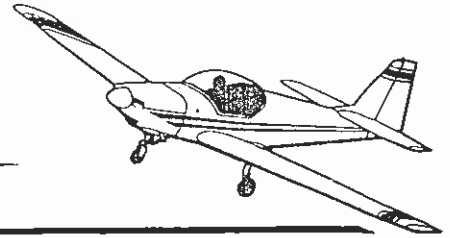
**ISSUED**  
11 APR 1994

**ISSUED BY:**


Date 29/3/94.

 for and on behalf of **SLINGSBY AVIATION LIMITED**  
 Kirkbymoorside, York YO6 6EZ England Tel 0751 32474 Telex 57597

Page 1 of 2



# SERVICE BULLETIN

SB No. 51 Issue No. 1

TITLE

**INSPECTION OF RUDDER CABLE TO LINK PLATE SOCKET HEAD CAP SCREW**

CONTINUED

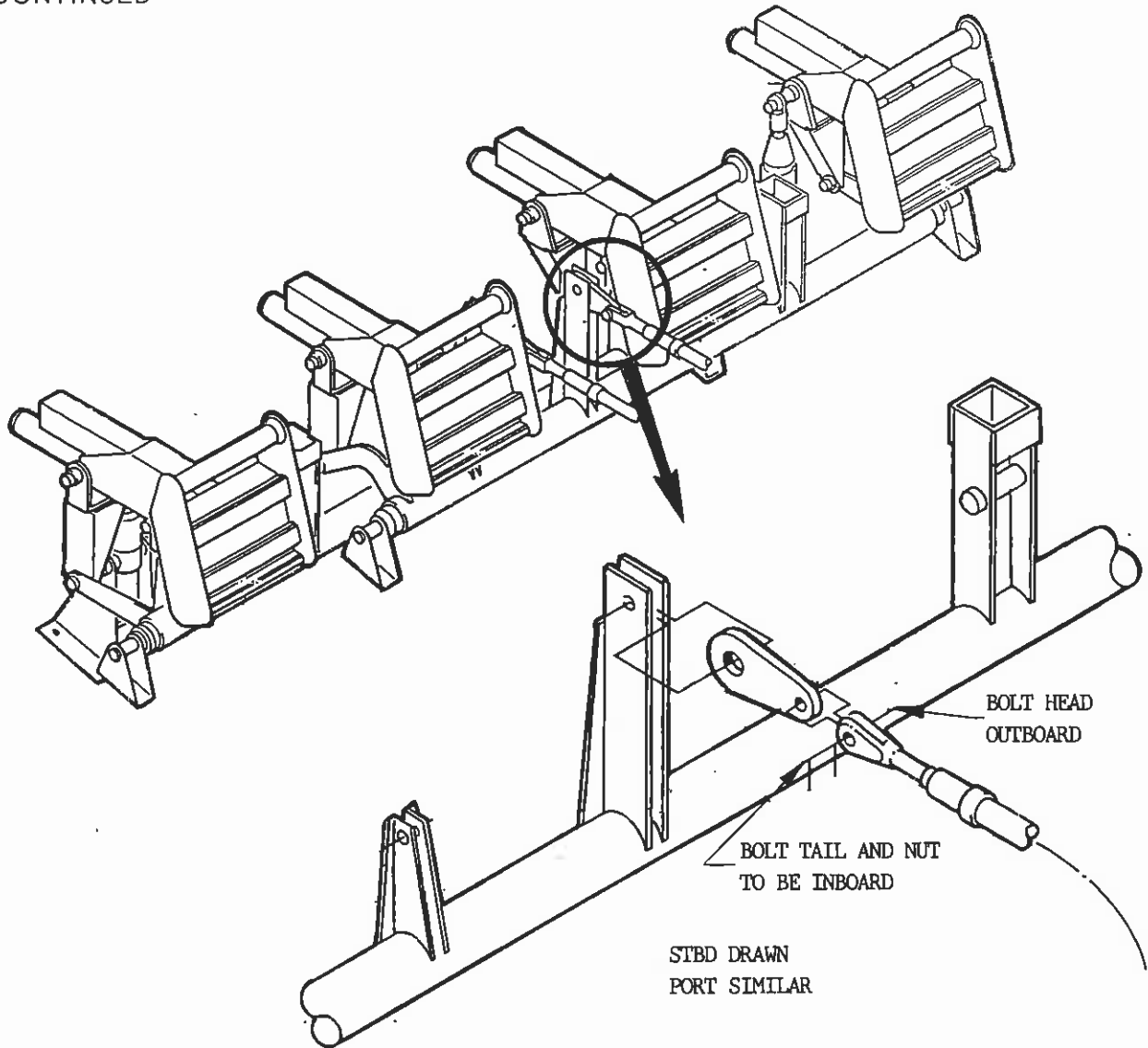


Fig 1

Approved:

*S. B.*

Date:

*29/7/94*

Page

2

of

2