

SERVICE BULLETIN

SB No. 86 Issue No. 1

TITLE
INSPECTION OF FUSELAGE DRAIN HOLES
CLASSIFICATION

This Service Bulletin has been classified as Recommended by SAL

COMPLIANCE

Within 50 flying hours

APPLICABILITY:

T67B, T67C Series, T67M, T67M-MkII, T67M200, T67M260 and T67M260-T3A.

INTRODUCTION:

A case has been reported of water accumulation in the cockpit forward of Frame 3 and in the aft fuselage in the region of Frame 6. On investigation it was noted that the floor covering covers drain holes in the cockpit floor. At Frame 5 and 6, both of the inboard ECS condenser mounting feet mouldings, covers a drain channel on each frame. The latter is only applicable to T67M260 and T67M260-T3A aircraft.

ACTION

1. Locate 2 off drain holes beneath floor covering and drill appropriate holes in covers. Ref. Fig. 1.
2. T67M260 and T67M260-T3A only.

On forward face of aft condenser mounting foot and aft face of forward condenser mounting foot, drill 6mm dia drain hole, do not damage flange. Applicable to inboard mountings only. Ref. Fig 2.

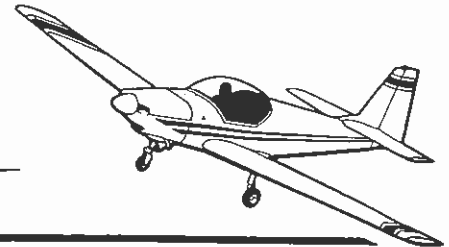
3. General, check all drain holes and drain channels (through fuselage frames) are clear of debris. Ref. Fig. 3.
4. Annotate in logbook S.B. 86 complied with.

ISSUED BY:

Date 5.7.96.

 for and on behalf of **SLINGSBY AVIATION LIMITED**
 Kirkbymoorside York YO6 6EZ England Tel 0751 32474 Telex 57597

Page 1 of 3



SERVICE BULLETIN

SB No. 86 Issue No. 1

TITLE INSPECTION OF FUSELAGE DRAIN HOLES

CONTINUED

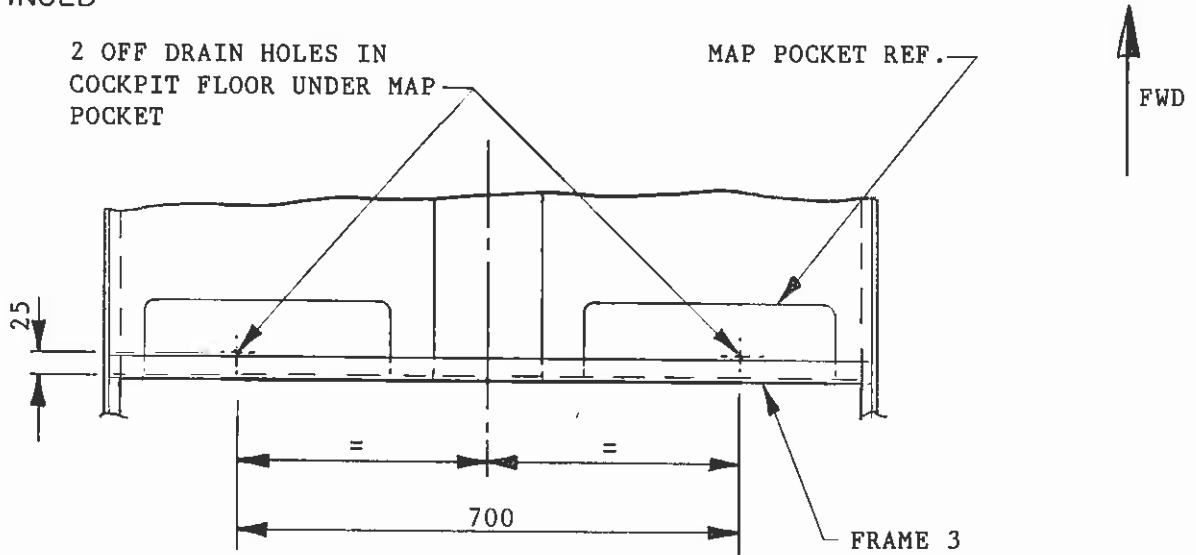


FIG 1
PART PLAN VIEW ON FWD COCKPIT

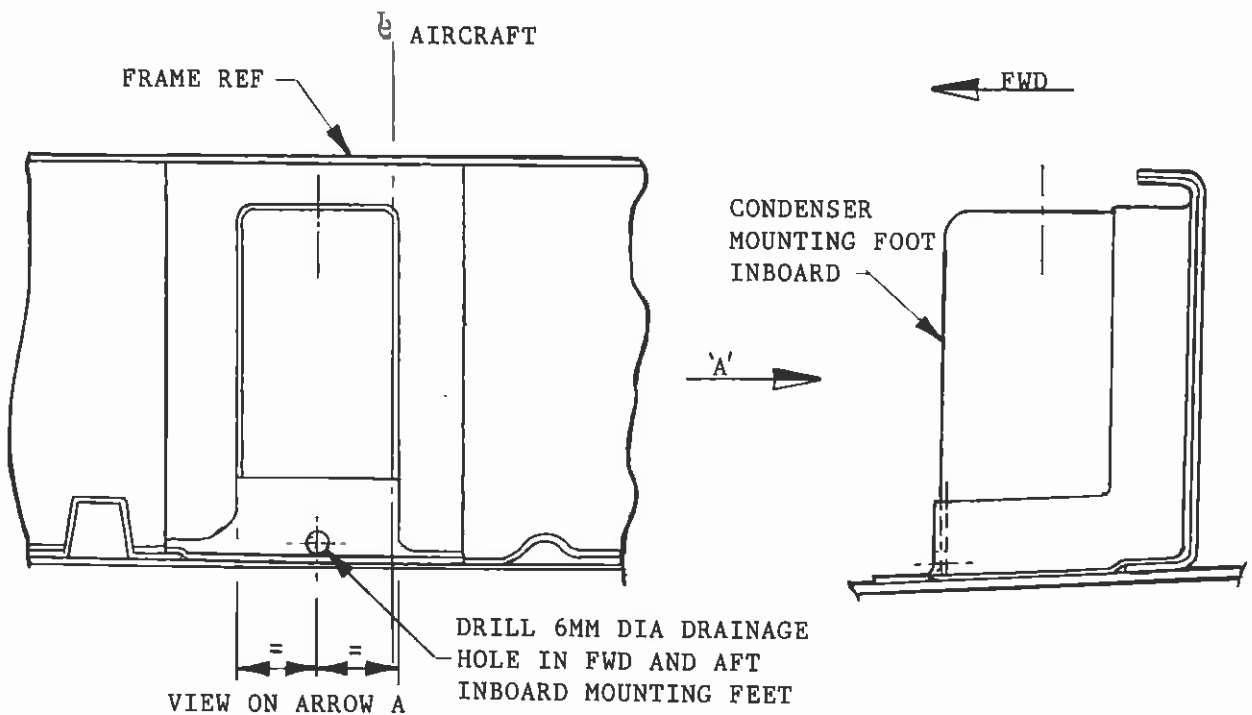
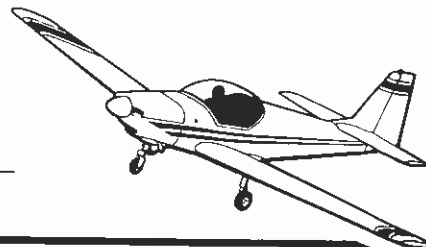


FIG 2
VIEW ON AFT INBOARD CONDENSER MOUNTING FOOT FWD INBOARD CONDENSER MOUNTING FOOT SIMILAR

Approved: *[Signature]*

Date: 5.7.96

Page 2 of 3

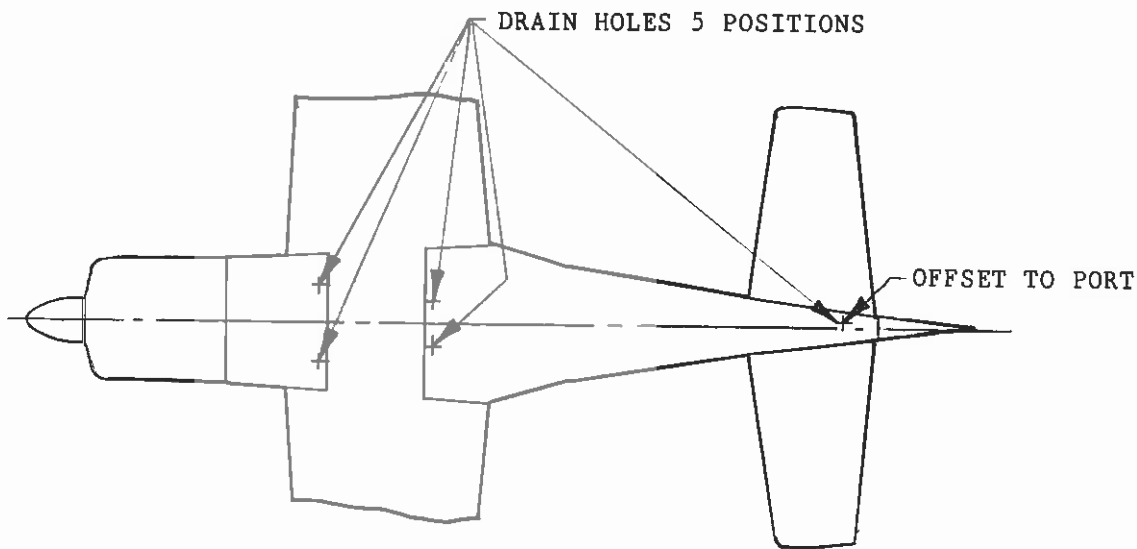


SERVICE BULLETIN

SB No. 86 Issue No. 1

TITLE INSPECTION OF FUSELAGE DRAIN HOLES

CONTINUED



VIEW ON UNDERSIDE

FIG 3
POSITION OF FUSELAGE DRAIN HOLES

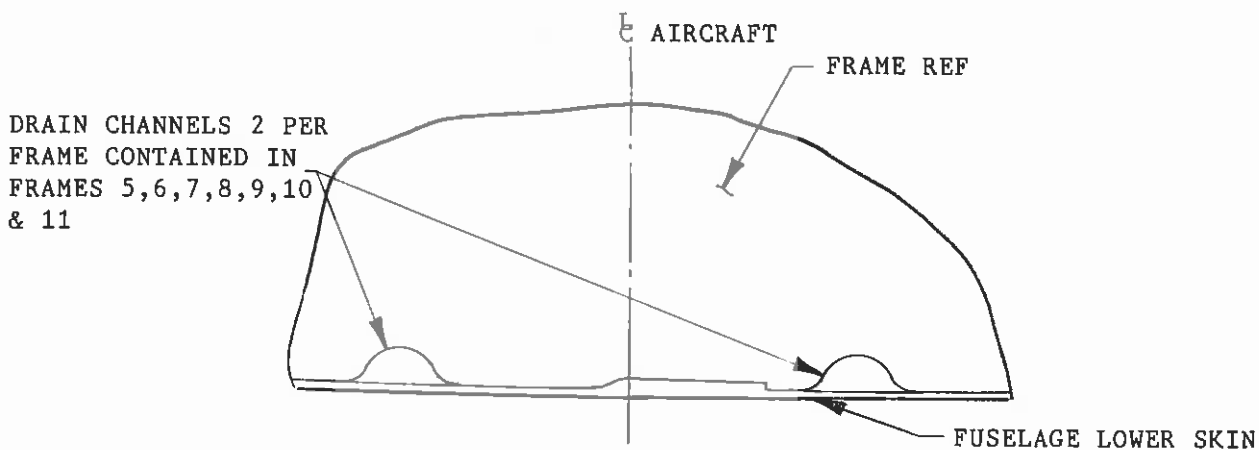


FIG 4
PART VIEW ON TYPICAL FRAME

Approved:

Date: 5.7.96

Page 3 of 3