**SERVICE BULLETIN**

SB No. 100 Issue No. 2

TITLE WATER INGRESS INTO COCKPIT FROM ECS FRAME 2 BAY**CLASSIFICATION**

This Service Bulletin has been classified as Highly Recommended by SAL

COMPLIANCE

As required by customer.

This S.B.100 is re-written to incorporate references to the 'Y' piece Post Mod M680B.

APPLICABILITY:

T67M260-T3A Post Mod M501A, Pre Mod 680B aircraft.

INTRODUCTION:

Cases have occurred of water ingress into cockpit from Frame 2 bay which houses the ECS evaporator. Upon further investigation it was found that the bay had not been sealed.

In addition, to assist in draining any accumulated water in the ECS bay, the drain line is altered to accommodate a 'Y' junction piece in lieu of 'T' piece.

This is a one time inspection and rectification.

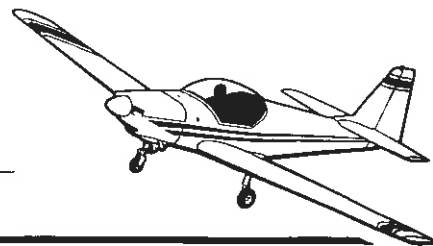
ACTION

1. From the underside of Frame 2, check suspect areas for sealant. Refer Fig. 1.
2. If holes are visible gain access into Frame 2, remove any water, clean and degrease around areas to be sealed.
 - 2.1 Apply sealant RTV 781 (or 732 or 786) around air conditioning rubber hoses. This action is part of Mod M501A.
 - 2.2 If hole exists at forward left hand side of bay floor, then from a sheet of aluminium self adhesive foil, cut a blank approx. 1/2" oversize than the hole and bond into position.

ISSUED BY:

Date 18-4-96

for and on behalf of **SLINGSBY AVIATION LIMITED**
Kirkbymoorside, York YO6 6EZ England Tel 0751 324777

**SERVICE BULLETIN**

SB No.

100

Issue No.

2

TITLE

WATER INGRESS INTO COCKPIT FROM ECS FRAME 2 BAY

CONTINUED

3. Refer Fig. 2. Gain access to right hand side of Frame 1 aft face, clip ty-wrap holding drain tube, mark new ty-rap base position and remove required insulation, bond new ty-rap base, 126-31-165, into position using Redux 420. Allow to cure.

Remove 'T' piece and replace with 'Y' piece, 126-37-166, wirelock to secure. Ty-rap drain tube to new ty-rap base with ty-rap 126-31-134. Ensure drain tube has minimal water traps. This action incorporates Mod M680B.

4. Record in logbook SB 100 complied with and Mod M680B incorporated.

Parts for Action 3 can be obtained as Mod Kit T67A-05-680B and obtained from SAL Product Support Department.

Approved:



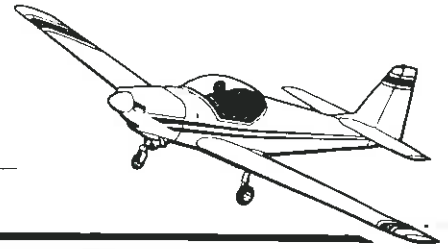
Date: 18-4-96

Page

2

of

4



SERVICE BULLETIN

SB No. 100 Issue No. 2

TITLE WATER INGRESS INTO COCKPIT FROM ECS FRAME 2 BAY

CONTINUED

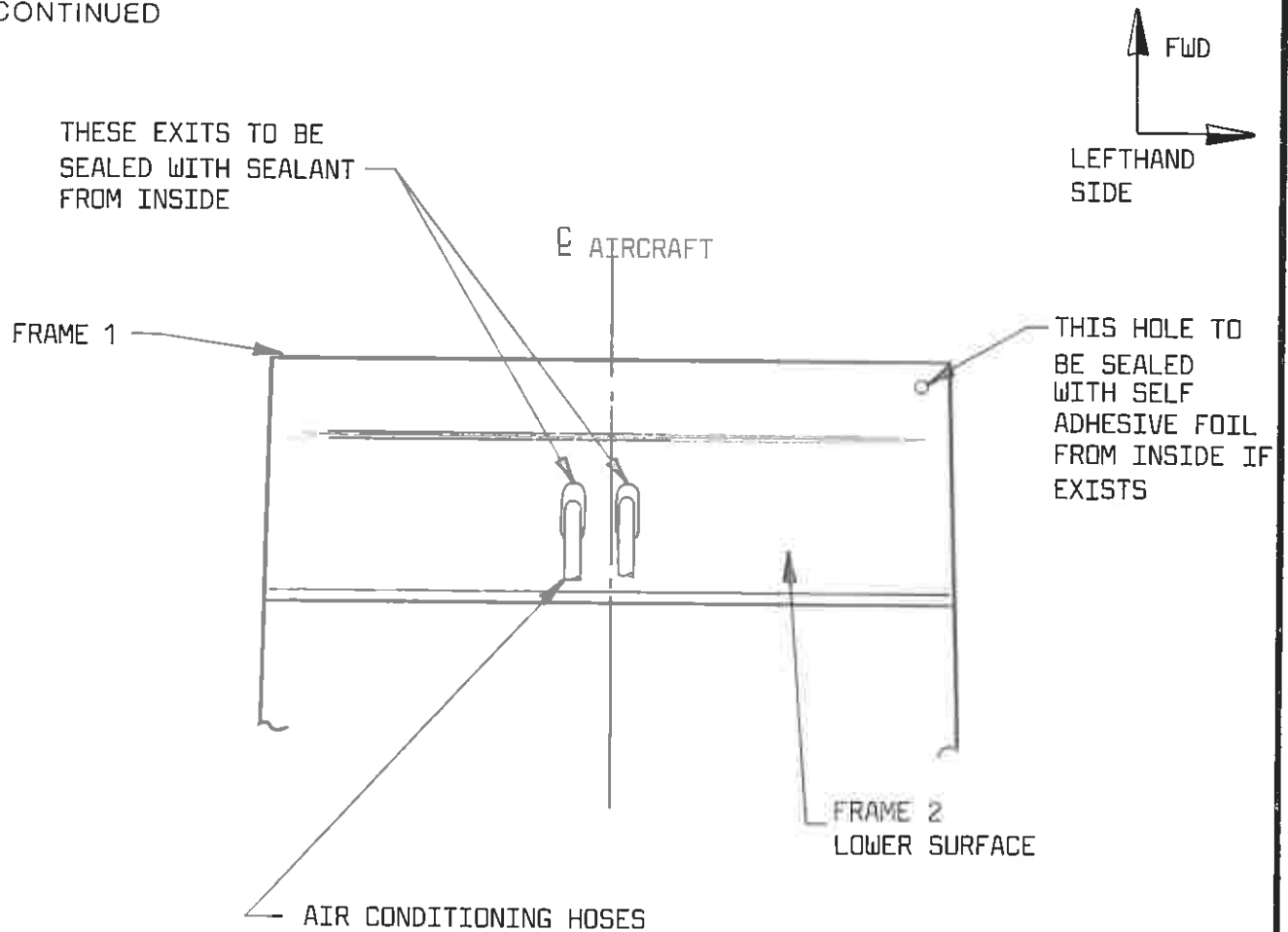


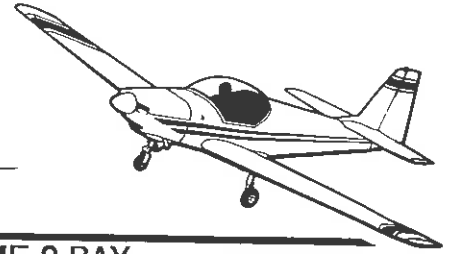
FIG 1
VIEW LOOKING UP ONTO UNDERSIDE OF FRAME 2

Approved:

B. M. Mellor

Date: 18-4-96

Page 3 of 4



SERVICE BULLETIN

SB No.

100

Issue No.

2

TITLE **WATER INGRESS INTO COCKPIT FROM ECS FRAME 2 BAY**

CONTINUED

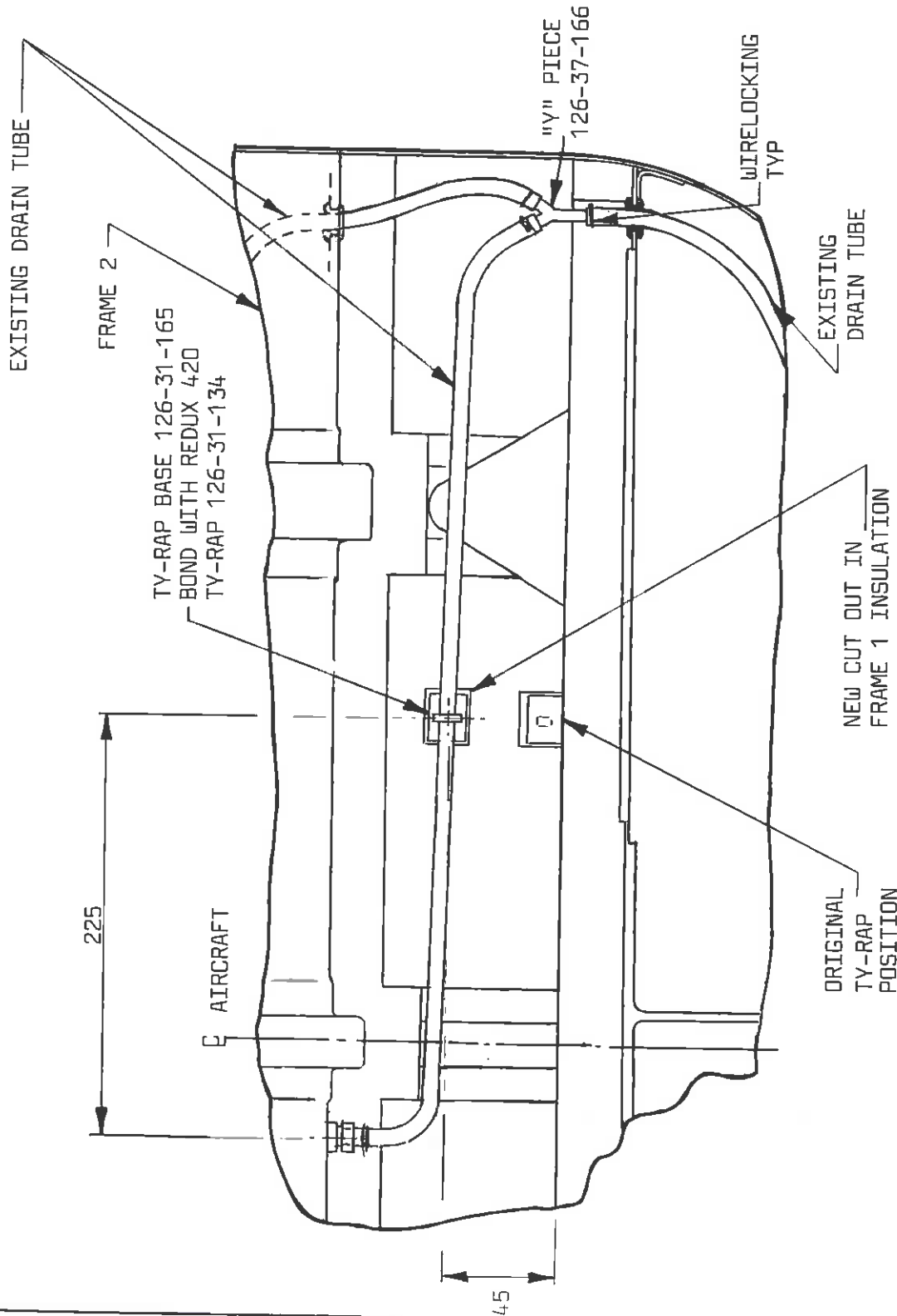


FIG 2
VIEW LOOKING FORWARD ONTO AFT FACE OF FR 1 - R H SIDE

Approved:

B. Mellen

Date: 18-4-96.

Page 4 of 4