

Service Bulletin

S.B. No: 120

Title: INSPECTION OF RUDDER BAR SUPPORT BRACKETS

Compliance: At next 150 Flying Hours and then at every Annual in conjunction with SB 187 or SB 188 as applicable.

Applicability: T67B, T67C series, T67M (excluding works no. 1999), T67M-MkII, T67M200, T67M260 and T67M260-T3A.

This Service Bulletin is the subject of EASA Airworthiness Directive (AD), 2009-0013.

This issue is re-written in its entirety and supersedes Issue 3. Reference to Service Bulletins SB 187 & 188 and to welded Post Mod M763 brackets added. Inspection for welded or non-welded brackets introduced.

INTRODUCTION:

Cases have been reported of cracking in the following brazed joints on the rudder pedal bar support bracket T67M-45-245: inboard pin joint and web to pin joint.

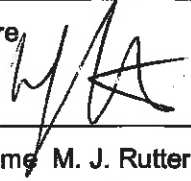
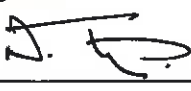
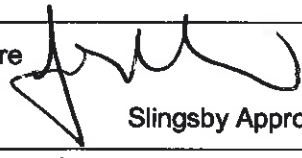
As a consequence Modification, M763, was raised to introduce all welded or partially welded/brazed brackets, as an alternative on the Pre T67M260 Firefly types and as an in build Modification on the T67M260 series and T67M200 works numbers 2264 & 2265 Firefly types. The new bracket numbers are T67M-45-277/278/279 & 280; these replace T67M-45-239/240/245 & 246 respectively on the T67M260 series and T67M200 works numbers 2264 & 2265 and are supplied as spares in lieu of the original brazed type on the other Firefly variants.

Subsequent to the Modification action it has come to light that due to a sub-contractor manufacturing error Brackets identified as T67M-45-277/278/279 & 280 have been assembled as completely brazed. Therefore as a consequence an inspection is required on the brackets to establish their method of assembly and if necessary re-identify or as in the case of the T67M260 series and T67M200 works numbers 2264 & 2265, replaced with correctly welded/part welded items.

This inspection is required on all four bracket positions.

ACTION:

1. Gain access to rudder bar support brackets, refer to Figure 1.
2. Establish whether the brackets are brazed or welded. Recommend removing portion of paint from pin fillets and web fillets. Weld will show as a natural steel colour, brazing as a "brass" colour.

Signature  Compiled	Signature  Design CVE	Signature  Slingsby Approval
Print Name M. J. Rutter	Print Name N. THORP	Print Name D.W. GODDARD
Date 30 th September 2008	Date 22-01-09	Date 22-01-09
SLINGSBY ADVANCED COMPOSITES LIMITED Kirkbymoorside, York. YO62 6EZ Tel: 01751 432474 Fax No: 01751 433016 E-mail: mike.rutter@slingsby.co.uk		Page 1 of 3 Issue 4

3. Should T67M260 series and T67M200 works numbers 2264 & 2265 aircraft have brackets fitted with all fillets brazed then these are to be removed and replaced with Post Mod M763 brackets T67M-45-277/278/279 & 280 as applicable. Note it is acceptable for the pin to be welded and web to be brazed.
4. If Post Mod M763 brackets have been fitted to T67B, T67C series, T67M (excluding works no. 1999), T67M-MkII and T67M200, (excluding works numbers 2264 & 2265), and on inspection found to be all brazed then they are to be re-identified as T67M-45-239/240/245 & 246 as applicable. Ensure Logbook is modified to delete Mod M763.
5. Check brackets T67M-45-277/278/279 & 280 in stores IAW Step 2, if entirely brazed and if brackets are intended for use on the T67M260 series and T67M200 works numbers 2264 & 2265 then these items are to be returned to SAACL. If these items are brazed and are intended for use on the T67B, T67C series, T67M (excluding works no. 1999), T67M-MkII, T67M200, (excluding works numbers 2264 & 2265) series Firefly then re-identify as T67M-45-239/240/245 & 246, refer Figure 1
6. Further to actions 2, 3 and 4 inspect both welded and brazed joints for cracking. If cracks found then replace bracket with new item. Refer View on Arrow 'A' Figure 1.

Note: reference T67B, T67C series, T67M (excluding works no. 1999), T67M-MkII, T67M200, (excluding works numbers 2264 & 2265), if brazed bracket is cracked then all four brazed brackets are to be replaced with Post Mod M763 brackets, i.e. T67M-45-277/278/279 & 280, refer Figure 1.
7. Restore paint finish.
8. Annotate logbook inspection carried out and, as applicable, Post Mod M763 brackets fitted.
9. Inspection steps 6 & 8 at each Annual in conjunction with SB 187 & SB 188 (latest issue) as applicable.

Replacement brackets may be obtained from SAACL Product Support Department.

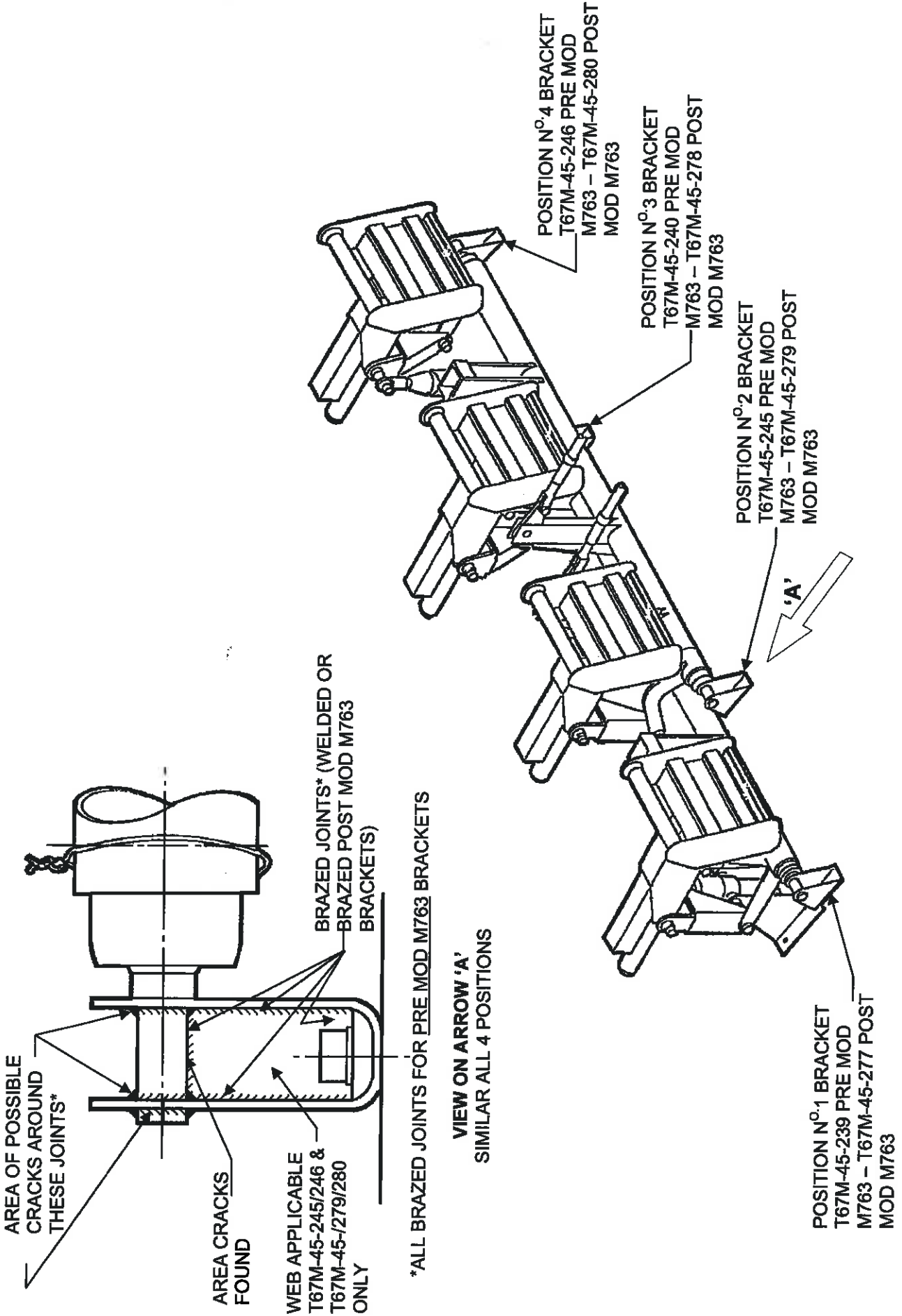


FIGURE 1
RUDDER PEDAL MECHANISM