

SERVICE BULLETIN

SB No. 003

Issue No. 1

TITLE

INSPECTION OF RUDDER/TOE BRAKE ASSEMBLY FOR SECURITY OF HEXAGON SOCKET CAP SCREWS

CLASSIFICATION RECOMMENDED

COMPLIANCE INSPECTION TO BE CARRIED OUT BEFORE NEXT FLIGHT AND AT SUBSEQUENT 100 HOUR SERVICES.

APPLICABILITY:

All T67B and T67M aircraft.

JUSTIFICATION:

A recent inspection of a T67B aircraft revealed 3 loose screws. This is a potential failure case for the toe-brake and rudder control systems.

ACTION:

Check security of 14 (off) hexagon socket cap screws, ref: Figure on Page 2.

Any screw found to be loose or partly disengaged should be removed for cleaning and degreasing.

Replace the screws using Loctite Nutlock 242 only.

Check rudder controls for full and free movement with the nosewheel raised clear of the ground.

MAN HOURS:

Quarter hour inspection.

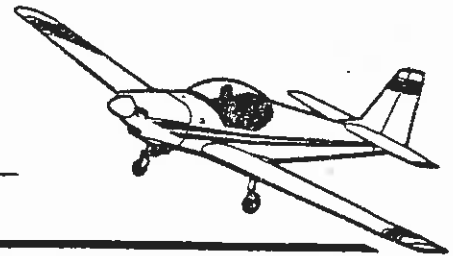
ISSUED BY:

B. Mellens

Date 2.6.04

for and on behalf of SLINGSBY AVIATION LIMITED
Kirkbymoorside York YO6 6EZ England Tel: 011751 1751 Telex: 61501

Page 1 of 2



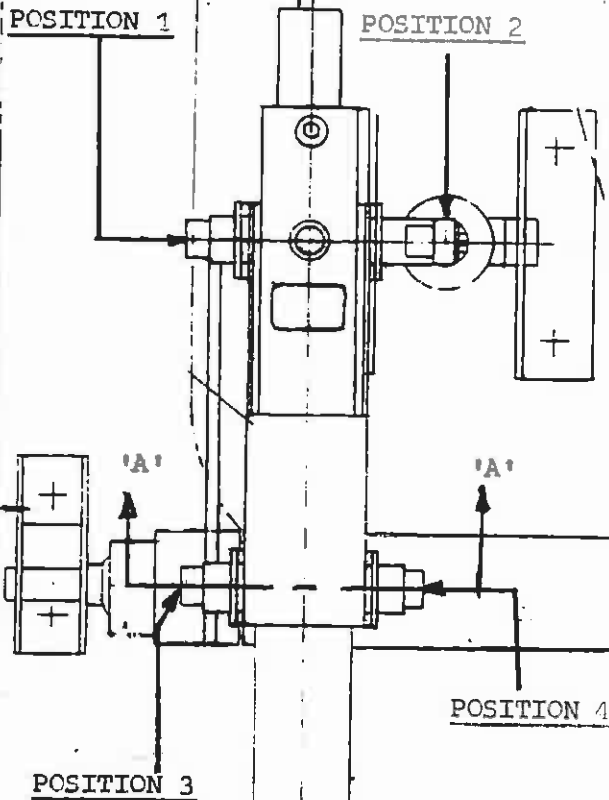
SERVICE BULLETIN

SB No. 008 Issue No. 1

TITLE INSPECTION OF RUDDER/TOE BRAKE ASSEMBLY FOR SECURITY OF HEXAGON SOCKET CAP SCREWS

CLASSIFICATION RECOMMENDED

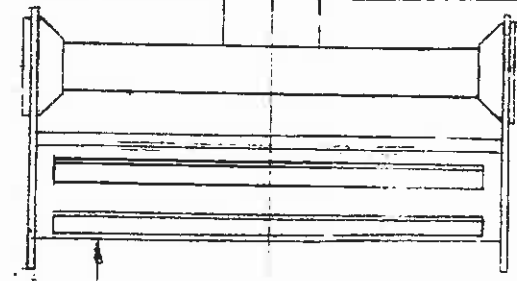
COMPLIANCE INSPECTION TO BE CARRIED OUT BEFORE NEXT FLIGHT AND AT SUBSEQUENT 100 HOUR SERVICES.



POSITION OF 14 (OFF) SCREWS:

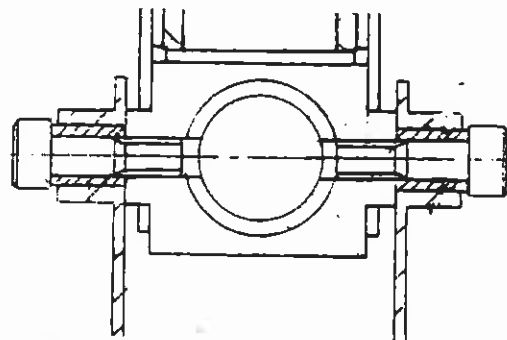
PEDAL ASSY

- PORT OUTER : 1, 3 & 4
- PORT INNER : 1, 2, 3 & 4
- STBD INNER : 1, 2, 3 & 4
- STBD OUTER : 2, 3 & 4



PLAN VIEW : PORT SIDE
OUTER RUDDER PEDAL ASSY

HEXAGON SOCKET
CAP SCREWS



SECTION 'A-A'

ISSUED BY:

B. Mellers

Date 8.6.84

for and on behalf of SLINGSBY AVIATION LIMITED

Kirkbymoorside York YO6 6EZ England Tel 0751 31751 Tele. 57597

Page 2 of 2