

# SERVICE BULLETIN

SB No. 156 Issue No. 1

**TITLE** INSPECTION FOR ENGINE/PROPELLER CONTROL FOUL WITH FORWARD CONSOLE

**CLASSIFICATION**

This Service Bulletin has been classified by SAL as Recommended

**COMPLIANCE**

At next 150 flying hour check or 100 flying hour check, as applicable.

**APPLICABILITY:**

T67M260 and T67M260-T3A

**INTRODUCTION:**

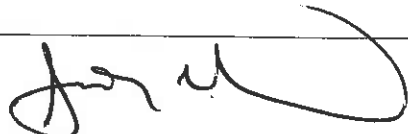
A case has been reported of a slight foul between the mixture and propeller cable clevis ends and the slots cut into the top of the forward console. This Service Bulletin requires an inspection and, in the case of a foul, enlargement of the slots. This is a one time inspection and rectification.

**ACTION:**

1. Remove throttle quadrant side panels.
2. Perform visual check for signs of fouling. Operate controls and check clearances, 1mm min required in the area of the cutouts at the front of the quadrant panel, see Fig. 1.
3. If no foul is found and clearances are adequate, refit side panels.
4. If a foul is noted, the slots may be enlarged as per Fig. 1 up to a maximum of 2mm on the side required. Ensure controls are adequately protected during any re-work and a means of extracting dust etc is available.
5. Check position of flat rubber spacers. These should be at the position shown on Fig. 1. If they are not, remove and re-position as shown. Re-bond into position using either Permabond C2 with surface activator (126-51-206/207) or 3M's 1300L adhesive (126-51-211).
6. Re-assemble disturbed items. Ensure all debris etc removed and controls have full and free operation.
7. Annotate in aircraft logbook "SB 156 complied with".

For any further information or materials, please contact SAL Product Support Department.

ISSUED BY:

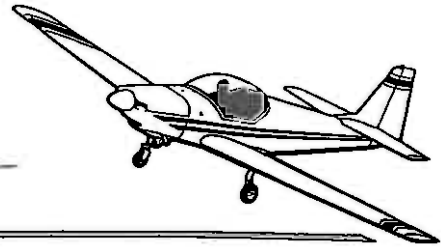


Date 21 AUG 1998

for and on behalf of SLINGSBY AVIATION LIMITED  
Kirkbymoorside, York YO6 6EZ, England

Tel. 01751 432474  
Fax 01751 431173

Page 1 of 2



# SERVICE BULLETIN

SB No.

156

Issue No.

1

TITLE

INSPECTION FOR ENGINE/PROPELLER CONTROL FOUL WITH FORWARD CONSOLE

CONTINUED

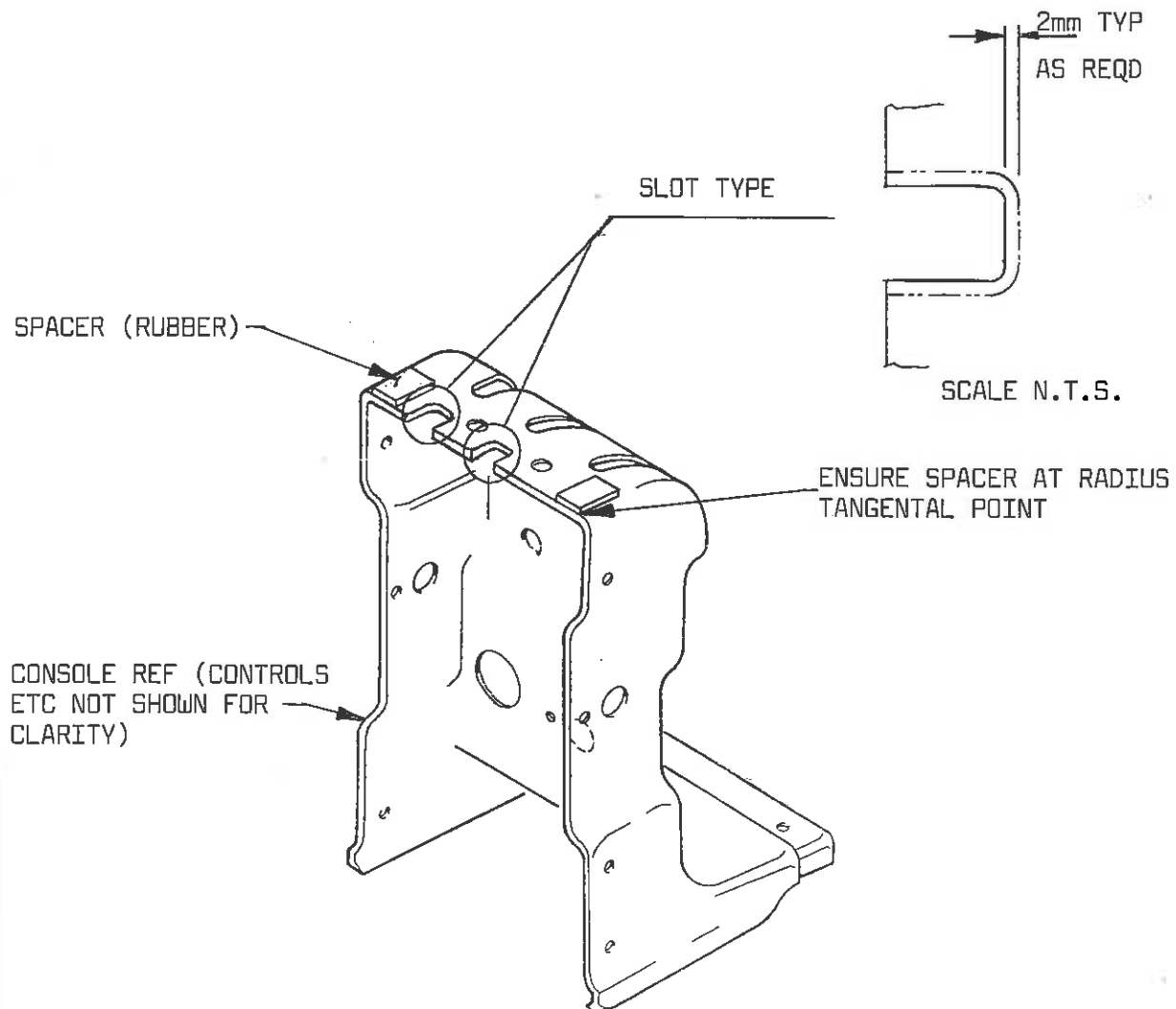


FIG 1  
SHOWING SLOT & SPACER POSITIONS.

Approved:

Date:

Page

2

of

2