**SERVICE BULLETIN**

SB No. 155 Issue No. 1

TITLE**INSPECTION FOR FOUL BETWEEN CANOPY SLIDE RAIL PIVOT BOLT
AND FUSELAGE SPLASH SHIELDS****CLASSIFICATION****This Service Bulletin has been classified by SAL as Highly Recommended****COMPLIANCE****At next 150 flying hour check or 100 flying hour check, as applicable****APPLICABILITY:****T67M-MkII, T67M260, T67M260-T3A.
Post Mod M129 T67C, T67M and T67M200.****INTRODUCTION:**

A case has been reported of the canopy slide rail pivot bolt (socket head cap screw) fouling with the GRP splash shields. This SB requires a one time inspection and, if necessary, a modification.

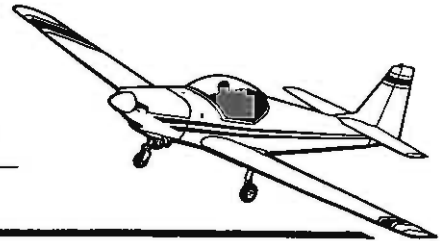
ACTION:

1. Ensure canopy slide rail has its head on left hand (port) side of the slider.
2. Open canopy and inspect bolt and fuselage splash shields for clearance.
3. If the clearance is greater than 1mm, ref Fig 1, no further action need be taken. If a foul has occurred or clearance is less than 1mm, a repair is to be invoked to increase splash shield clearance.
4. If applicable, repair i.a.w. Mod M843 on receipt of Mod Bulletin.
5. Annotate logbook "SB 155 complied with" on satisfactory inspection.

For Mod Bulletin Mod M843, materials and further information, please contact SAL Product Support Department.

ISSUED BY:Date **21 AUG 1998**for and on behalf of **SLINGSBY AVIATION LIMITED**
Kirkbymoorside, York YO6 6EZ, EnglandTel. 01751 432474
Fax 01751 431173

Page 1 of 2



SERVICE BULLETIN

SB No.

155

Issue No.

1

TITLE

**INSPECTION FOR FOUL BETWEEN CANOPY SLIDE RAIL PIVOT BOLT
AND FUSELAGE SPLASH SHIELDS**

CONTINUED

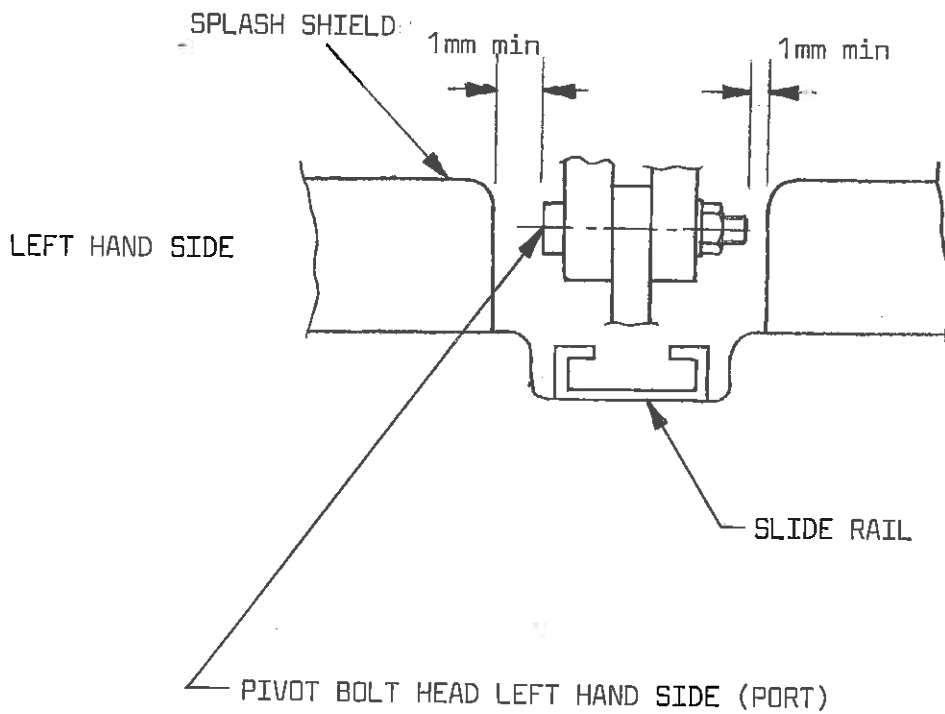


FIG 1 - CANOPY SLIDE RAIL
VIEW LOOKING FORWARD

Approved:

Date:

Page

2

of

2